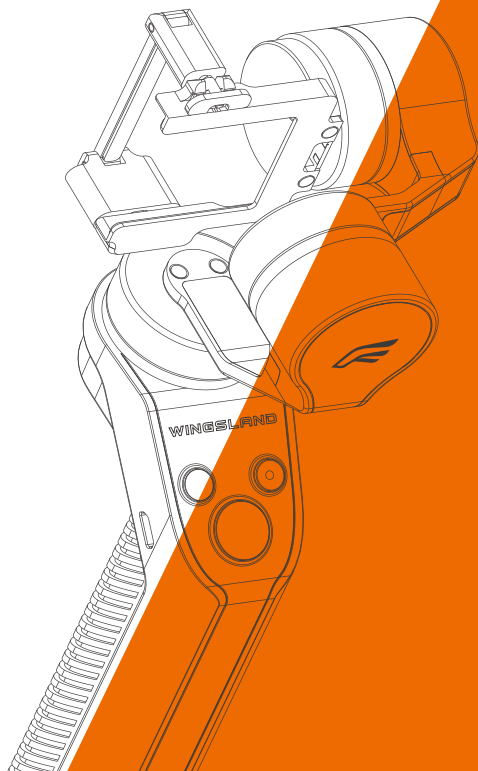


# ViPRO

## Handheld 3-Axis Brushless GIMBAL User Manual

WINGSLAND ViPRO V1.1



© 2016 WINGSLAND  
All Rights Reserved

Hot line:400-080-5969



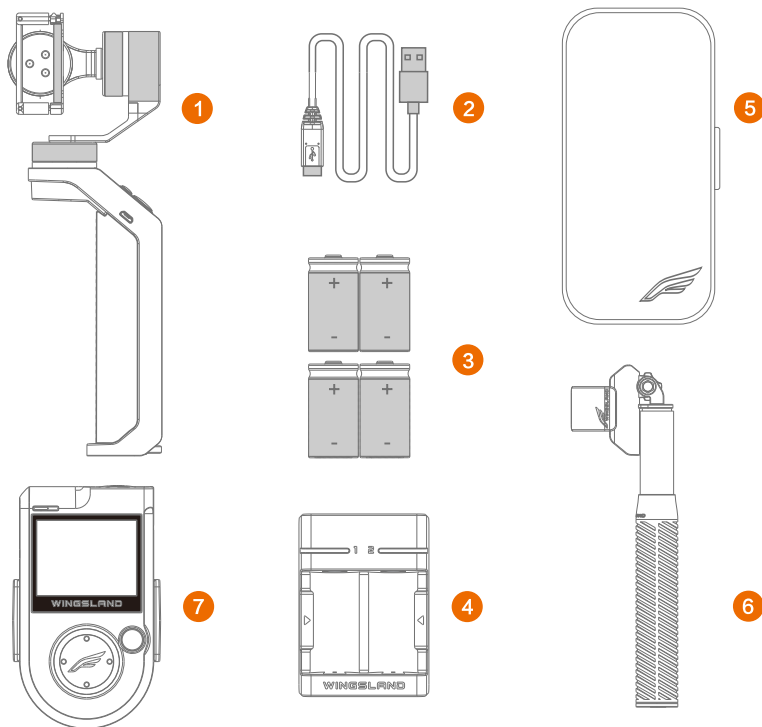
Shenzhen WINGSLAND Technology Co., Ltd

Add: 2F, 10 Block, ZhongYunTai Technology&Industry Park,  
Tangtou First Road, Shenzhen, Guangdong  
Tel: 89-0755-23123450

Product info in description depends on the actual product, specifications are  
subject to be changed without prior notice.



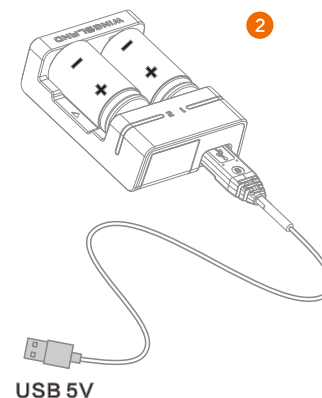
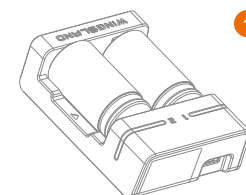
## What's in the box



- |                             |                                   |
|-----------------------------|-----------------------------------|
| 1. 1x GIMBAL                | 2. 1x USB Cable                   |
| 3. 4x Compatible Battery    | 4. 1x Charger                     |
| 5. 1x Case                  | 6. Extension Rod(Optional)        |
| 7. Telecontroller(Optional) | 8. Mobile Device Holder(Optional) |

## Charging

1. Insert USB Cable into mobile device charger or computer charging port.
2. Connect USB Cable with Charger, the Charger Blue LED blinks once to finish self-check.
3. Set 2 Batteries into the Charger, the Charger Red LED turns solid red to start charging.
4. Charging is completed when the Charger Blue LED turns on.



Install Batteries:  
Unscrew battery compartment cover on the bottom of GIMBAL, put the batteries into the battery compartment directly.

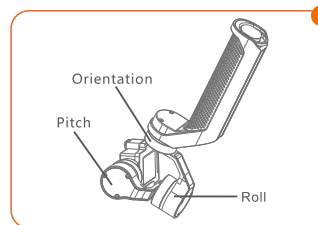
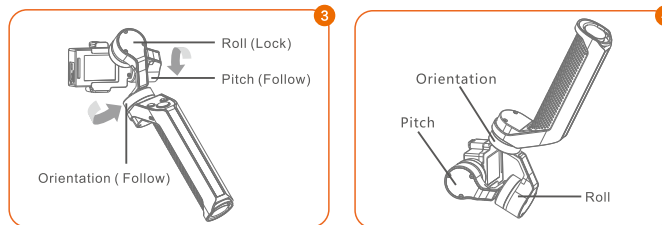
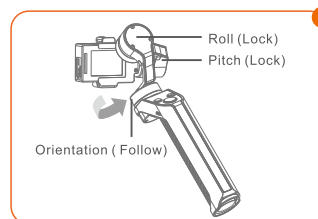
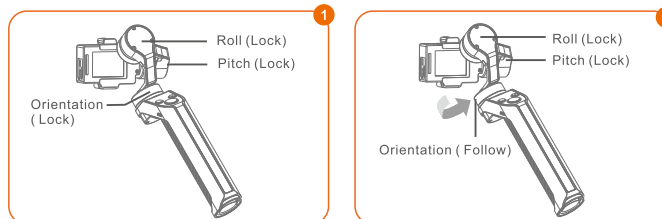
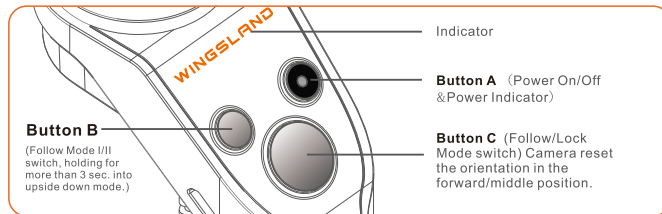
USB 5V



Warning

- ▲ Please make sure to use WINGSLAND genuine battery.
- ▲ Please ensure to take the batteries out of the Charger after the batteries are fully charged.
- ▲ Please do not store the battery in the wet or high-temperature environment.
- ▲ Please avoid short circuit.
- ▲ Please do not arbitrarily discard the battery, and dispose of the battery in accordance with the local regulations.

# How to Use



## Mode Status

Mode	Indicator	Roll	Orientation	Pitch
Lock Mode	Red LED	Lock	Lock	Lock
Follow Mode I	Orange LED	Lock	Follow	Lock
Follow Mode II	Blue LED	Lock	Follow	Follow

## Power On GIMBAL

After installing the camera tightly, press power button ( Button A) with holding for 3s to start GIMBAL. When the indicator turns on, the default state of the camera will be forward and centered.

## Power Off GIMBAL

Press power button ( Button A) with holding for 3 sec. to power off the GIMBAL, the power indicator will be turn off and switch to Follow Mode I.

## Lock/Follow Mode switch and Reset (Figure 1)

Follow Mode is defaulted after GIMBAL is powered on. Press Button C to switch between Follow Mode and Lock Mode. Press Button C with holding for 2 sec. to center the camera.

## Follow Mode I /Follow Mode II switch(Figure 1 & Figure 1)

Follow Mode I is defaulted after GIMBAL is powered on, the orientation of camera will follow the action of GIMBAL. If you want to adjust the pitch angle, you need to switch into Follow Mode II by pressing Button B.

## Upside Down Mode ( Figure 4)

When shooting a low angle view, switch GIMBAL Operating Mode into Upside Down Mode by pressing Button B with holding for more than 3 sec. Press again, Upside Down Mode ESC.

## Specifications

Item	Standard	Range	Note
Working Voltage	8.4V	7.0V~8.4V	2S18350
Pitch Angle	Horizontal	-160° Upward ~160° Downward	Horizontal
Roll Angle	Horizontal	-50° ~+50°	
Heading Angle ( Vertical)	/	-160° Left~160° Right	Vertical
Heading Angle( Horizontal)	/	-50° ~+50°	Horizontal
Pitch Speed	/	2° /Sec.~100° /Sec.	
Heading Speed	/	3° /Sec.~160° /Sec.	
Motors Overload Protection Current		1200MA	
Operating Temp		-45~85℃	
Package Size		28cmX15cmX9cm	
Weight		285g(Exclude Camera & Batteries)	

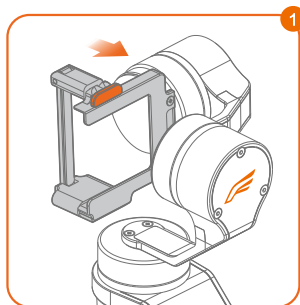
## Firmware Upgrade

Regarding the upgrade and guide, please visit our website [www.szsungreen.com](http://www.szsungreen.com) to download the files



Please wait for about 2s before other operation when you switch the mode.

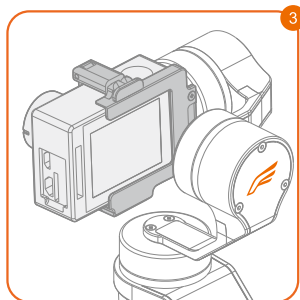
## Install Camera



► Pull out the lock catch.



► Lift upwards to open.



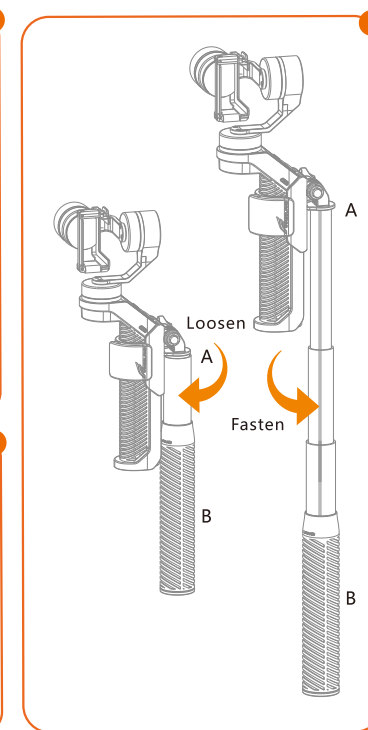
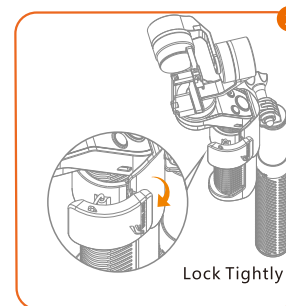
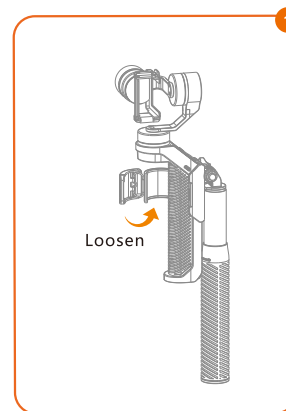
► Install camera correctly, please pay attention to the Camera Lens and Screen installation methods. Make sure position are as shown in the figure 3 after installing the camera.



Notice

**It's compatible with GoPro Hero series, Xiaomi Yi sport camera, SJ4000 and other sport cameras similar size to GoPro.**

## Extension Rod Usage



1. Assemble the extension rod according to the graphic descriptions.
2. Grasp extension rod end A, spin end B in the anti-clockwise direction, loosen the fixed device on the joint.
3. Find an appropriate length you need, hold extension rod end A, spin end B in the clockwise direction, fasten the fixed device on the joint.